

# Lithological-Paleogeographic maps of Paratethys

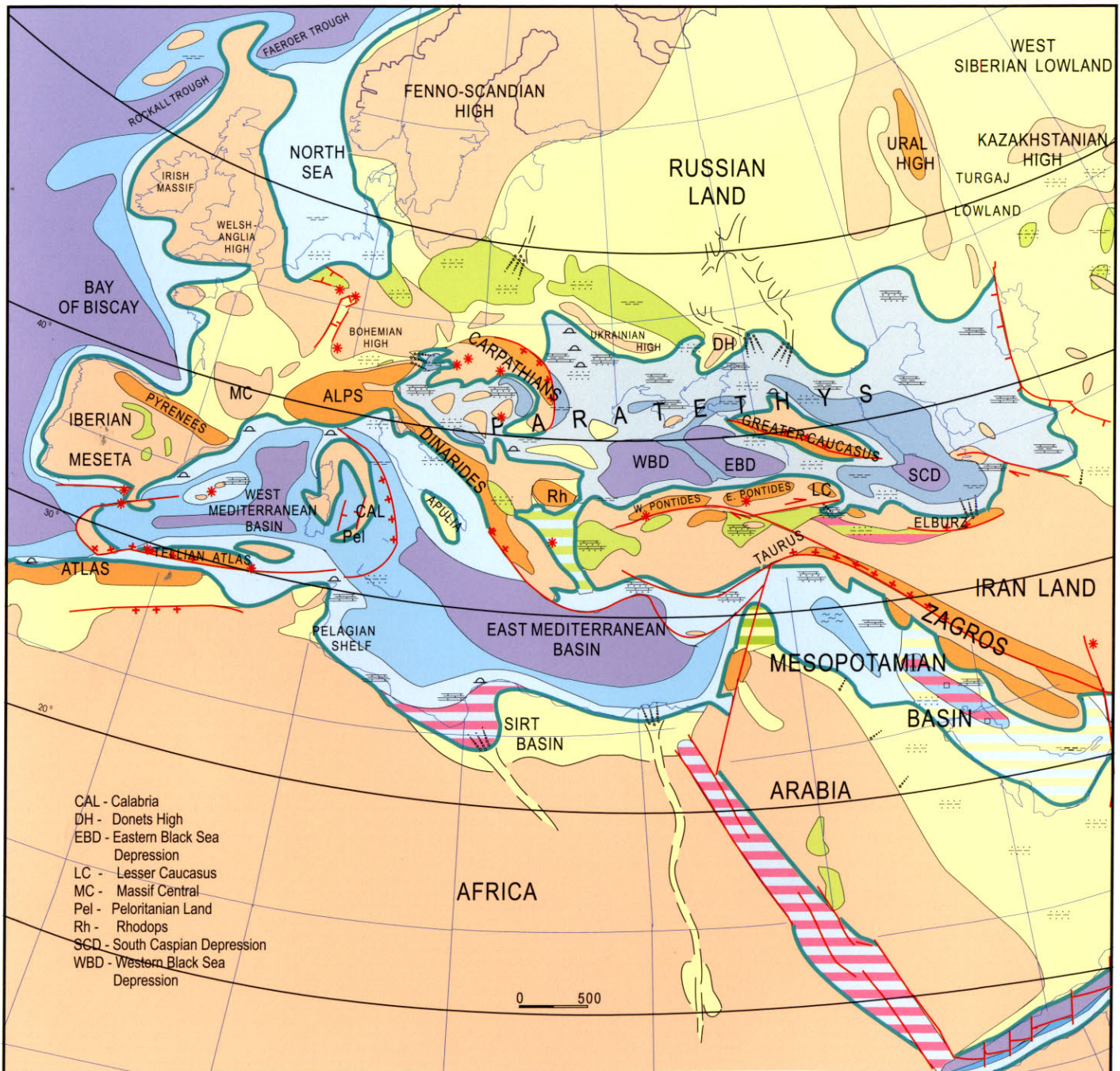
Compiled by: N.P. Paramonova, I.G. Shcherba, S.O. Khondkarian

Map **7**

Co-authors: K. Gürs, Ju.I. Iosifova,  
T.V. Jakubovskaja, M. Kovac, I. Magyar,  
T.N. Pinchuk, S.V. Popov, A.S. Zastrozhnov

**Late Middle Miocene**

**12 -11 Ma**



Paleontological Institute RAS, Moscow

© Forschungsinstitut und Naturmuseum Senckenberg, Frankfurt am Main 2004